

liteflip[®] autopilot

Look into the future.

optrel[®]
swiss made 



Automatically better welding

The first flip-up with autopilot arrived.

UNTIL TODAY:

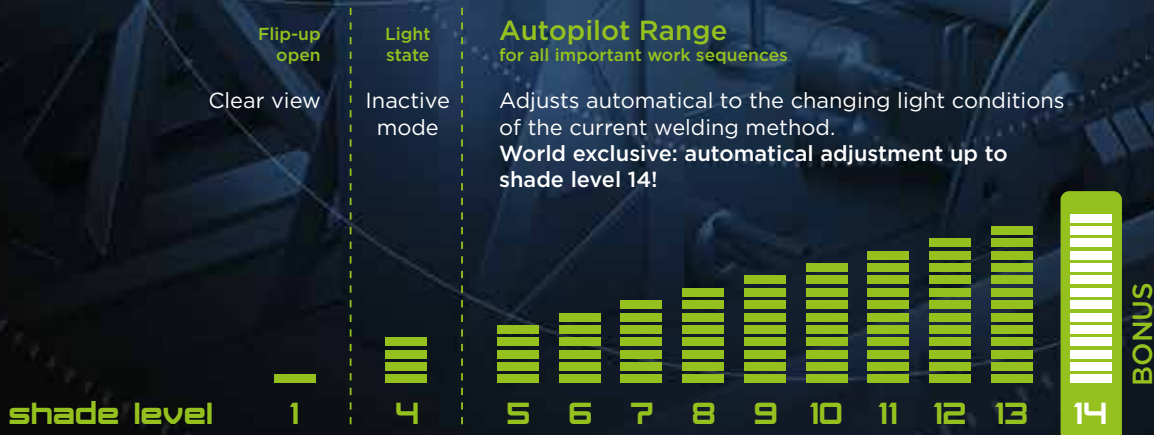
THE SEMI-AUTOMATED WELDING MASK...

automatically darkens as soon as the welding arc ignites. The protection level must be set manually according to changing lighting.

NEW:

THE FULLY AUTOMATED WELDING MASK...

automatically darkens as soon as the welding arc ignites. No manual protection level setting necessary. The optrel **liteflip autopilot** automatically adjusts to changing lighting.



optrel **liteflip autopilot**:

Combines the advantages of a flip-up welding helmet with the comfort of the optrel autopilot. Combines perfectly with the optrel e3000 respiratory protection.

Welding made easy.

Super lightweight flip-up welding helmet with automatic shade level adjustment makes welding much more comfortable and easy.



AUTOPILOT WITH SHADE LEVELS 1 / 4 / 5-14

With a shade level range from 5 to 14 and fully automatic adjustment, the optrel **liteflip autopilot** achieves a new level of performance: All work sequences, such as measuring, testing, grinding, and other welding applications, can be handled without any manual adjustments at the helmet. And of course, without displacing the helmet itself. The welder is always protected perfectly.



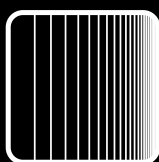
TRUE-COLOR VIEW

The specially developed UV/IR filter allows a realistic perception of colours and at long last brings colour into the world of the welder.



TWILIGHT ADF TECHNOLOGY

Unlike other ADF lenses that rapidly return to light, the Twilight ADF Technology restores light more naturally, presenting a smoother transition to the eyes. This exclusive technology reduces eye fatigue on welders who are continuously welding, enabling them to work safer and more comfortably.



LIGHTWEIGHT

Weighing only 530g, the **liteflip autopilot** is one of the lightest flip-up welding helmets available. Its ergonomic design minimizes strain on the head and neck, ensuring comfort throughout the work day.



RESPIRATORY PROTECTION

The **liteflip autopilot** is perfectly combined with the optrel e3000 PAPR respiratory system. With its integrated high-performance particle filter (TH3), welders are adequately protected against smoke, dust, and aerosols.

2+1 YEAR WARRANTY

Register your optrel **liteflip autopilot** online and receive an additional year of warranty for free.





TECHNICAL DATA

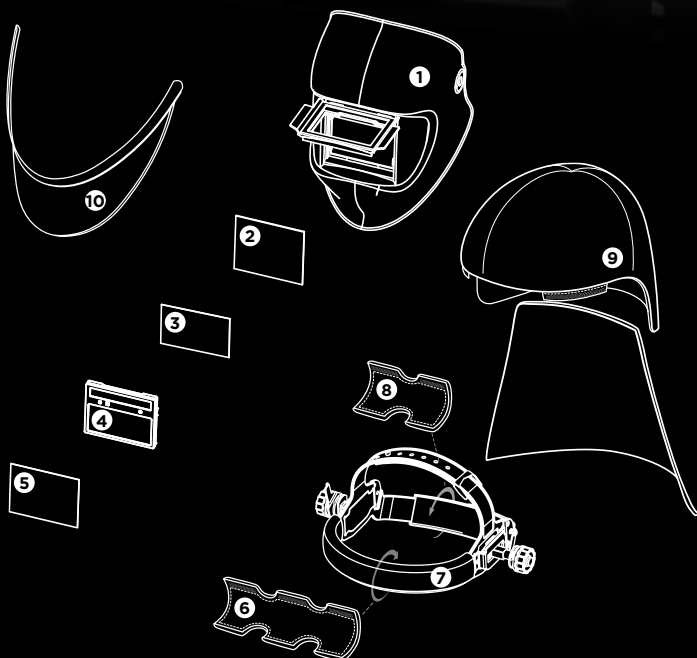
Description	<p>Fully automatic welding helmet (no manual adjustment necessary) with flip-up function for a clear view.</p> <p>True-color view, ADF with shade level range 3/5-14 with autopilot (automatic shade level adjustment), +/- 2 individual manual offset, sensitivity adjustment, and opening delay with or without twilight function.</p>			Classifikation	Optical class:	1
					Scattered light:	1
					Homogeneity:	1
					Angular dependence:	2
Shade levels	Open / clear view:	shade level 1		Shape stability	Welding mask:	up to 220°C / 428°F
	Closed / inactive:	shade level 4			Front cover lens:	up to 137°C / 279°F
	Closed / active:	shade levels 5-14		Eye protection	Ultraviolet / Infrared Protection:	maximum protection at any shade level
Autopilot	Automatic shade level adjustment for shade level range 5 to 14 with individual calibration option of ± 2 .			Operating temperature	-10°C to +70°C / 14°F to 158°F	
Power supply	Photovoltaic cell, 2 pcs batteries 3V exchangeable (CR2032)			Storage temperature	-20°C to +80°C / -4°F to 176°F	
Operating time batteries	Approx. 3,000 hours (operating)			Weight	Standard helmet: 530 g / 18,7 oz	
Sensors	3 sensors				PAPR helmet: 730 g / 25,8 oz	
Sensitivity	Infinite adjustment, new with "Super High" range			Application ranges	<p>Any electric arc welding process</p> <p>Electrode Welding (Stick Welding, SMAW) / MIG / MAG (GMAW) / GMAW</p> <p>High melting rate process / Flux Cored Wire Welding / TIG welding (GTAW) / Plasma Arc Welding / Plasmacutting & Oxy-gas Welding</p> <p><i>Prohibited for laser welding!</i></p>	
Switching time	Light to dark:	0.100 ms at room temperature		Scope of delivery	Welding helmet, instruction manual, storage bag, batteries, warranty card	
		0.100 ms at 55°C / 131°F				
	Dark to light:	0.3 s or 1.5 s (with twilight function)		Standards	CE, ANSI Z87.1, EAC, complies with CSA Z94.3	
Field of view	Flip-up open:	82 x 102 mm		Warranty	2 years (except batteries)	
	Flip-up closed:	50 x 100 mm			1 year warranty extension for online product registration within the first 6 month.	
					http://register.optrel.com	

Helmet system	Art. Nr.	Main accessories	Art. Nr.
 liteflip autopilot welding helmet	1006.700	 optrel parking buddy	5002.900
 liteflip autopilot welding helmet with industrial helmet	1006.750	 Front cover lens	5000.391
 liteflip autopilot fresh air helmet	4441.700	 Safety lens	5000.390
 liteflip autopilot fresh air helmet with industrial helmet	4441.750	 optrel bag for helmets	9410.043.00



Spare parts and accessories

	Art. Nr.
1 Helmet shell liteflip autopilot	5001.916
PAPR helmet shell liteflip autopilot	4290.000
2 Safety lens (5 pcs.)	5000.390
3 Inside cover lens (5 pcs.)	5000.001
4 Spare ADF cartridge	5012.490
5 Front cover lens (5 pcs.)	5000.391
6 Cotton sweatband (2 pcs.)	5004.073
7 Adjustable headband (including sweatband and comfortband)	5003.250
8 Cotton sweatband (2 pcs.)	5004.020
9a Head & neck protector, leather	4028.016
9b Head & neck protector PAPR, leather	4028.031
10 Chest protector, leather	4028.015



A better view.
Better air.
Better work.



Your optrel Reseller:



optrel AG
industriestrasse 2
CH-9630 wattwil
switzerland
www.optrel.com
info@optrel.com

optrel.com



Art. no. 9412124.00